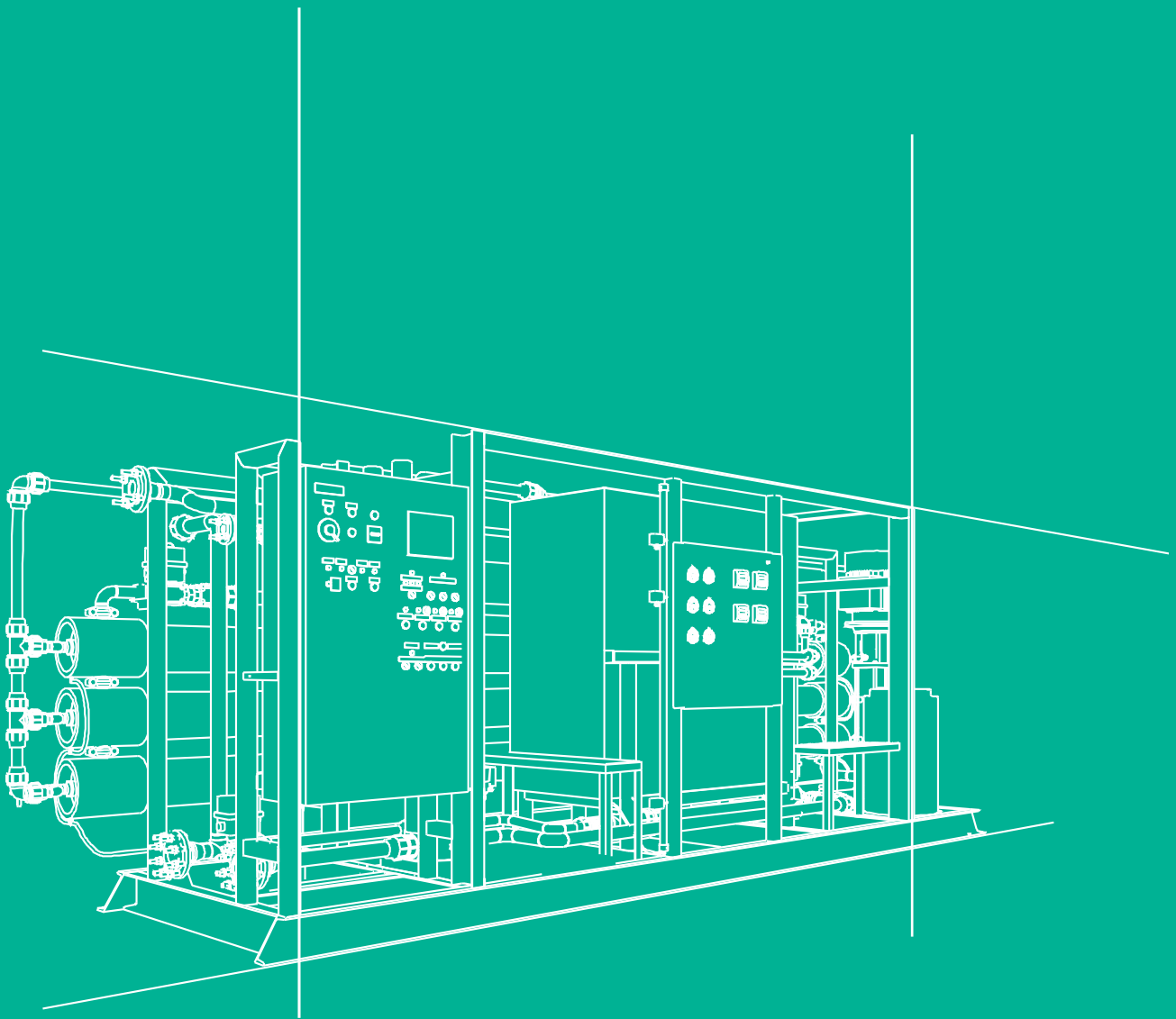




R.O. Units brackish water



From 2 to 1000 cubic meter per day

Reverse osmosis brackish water treatment

The SLCE® BW ranges are made up of a base skid, to which one can add a multi-media filter as well as numerous complementary accessories.

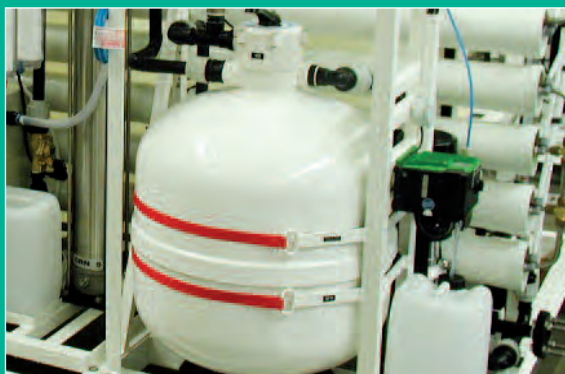
The Base Skid

It is assembled in a welded steel frame, containing the 5 μ pre-filtration, the HP pump set, the RO module with its pressure vessels and membranes, the control and safety instruments, the electric box and control panel and the membrane cleaning circuit.

It is fed with clear non-chlorinated raw water, via a pressurised network.

Additional Equipment

The SLCE® BW RO unit integrates all equipment, enabling it to operate independently. Numerous accessories can be associated with the basic machine, to carry out additional treatment of raw water or in the water produced.



• The multi-media filter and its low pressure pump :

This option is justified when the skid has to be supplied from a bore hole, a well or a river...

The multi media filter reinforces the efficiency of the pre-filtration, notably when the raw water is laden with suspended solids.

The low pressure pump supplies the skid from a buffer tank into which the raw water has been pumped.

- Coagulation of raw water full of colloidal material.
- Chlorination of polluted raw water.
- Softening of hard water.
- Neutralisation of water produced.
- Filtration through active carbon, etc.

Operation

The SLCE® BW RO unit is equipped with an automatic electric box carrying out the following functions :

- Automatic start-up and stop on level detection.
- Continuous monitoring of the quality of the water produced.
- Automatic rinsing of membranes.
- Management of the functional safety features of the machine.

CBW

Up to
12 m³/24h

Very compact unit easy to install in a small place, low energy consumption, fully equipped, it has the same features as the large capacity ranges : automatic start/stop on level detection, automatic rinsing of membranes, integrated membrane cleaning circuit...

It has a safety active carbon filter as a standard feature.

Available as standard with a positive displacement piston pump, certain models are also available with a multistage centrifugal pump, Type G (**).

Main applications

- **Production of drinking water**

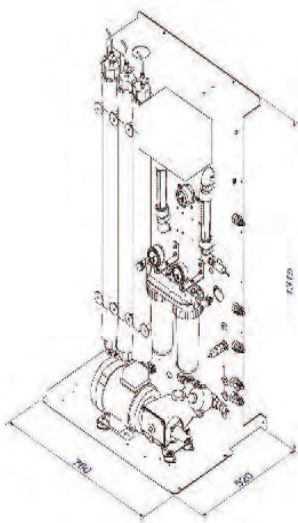
From a town water supply, when it does not comply with standards.
From water from bore holes, for life camps in regions where there is no drinking water.

- **Production of process water**

Hospital environment : sterile water, water for dialysis...

Washing : vehicles (light and heavy vehicles, rail carriages), laundries, dish-washing for catering establishments...

Mechanical industry : painting, surface treatment, pharmaceutical industry...



Special models

- **CBW1500**

Module in single block frame integrating the CBW RO unit and its pre-treatment, the 1500 litres storage tank, the pressurised distribution hydro-pneumatic system, all other equipment such as UV and chlorination, depending on the user's requirement.

- **CBW-BI**

Module integrating two osmosis stages, guaranteeing the production of water of very low conductivity, for the medical sector, the pharmaceutical industry...

Capacity (*) m ³ /24h		Model	Electric power kW	Mass kg
Salinity 2g/l	Salinity 5g/l			
2	1,5	CBW50	0,5	65
3	2	CBW100		70
4	3	CBW200		75
4	3	CBW200 G (**)	1	100
7	5	CBW300		110
9	7	CBW400		120
9	7	CBW400 G (**)		
12	10	CBW500		
12	10	CBW500 G (**)		

(*) Production figures given at +/- 10% from raw water with a temperature of 25°C and salinity as specified. Performance must be confirmed in the light of a full analysis of the water to be treated and depends on the specific conditions in which the equipment is being used.

(**) Multistage centrifugal pump versions.

EBW

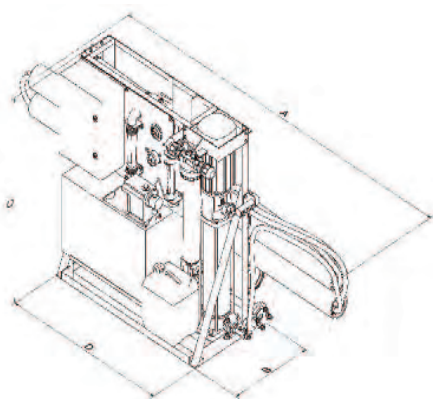
Up to
70 m³/24h

Ease of use with its simple, clear control panel, with an open frame design for low upkeep and ease of operation. It has a complete cleaning circuit with chemical preparation tank as a standard feature.



Main applications

- **Production of drinking water**
Production of drinking water from bore hole water, for life camps, in regions without drinking water.
- **Production of process water**
Mechanical industry, painting, surface treatment, pharmaceutical industry...

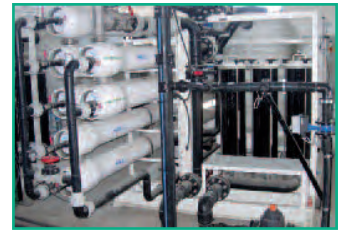
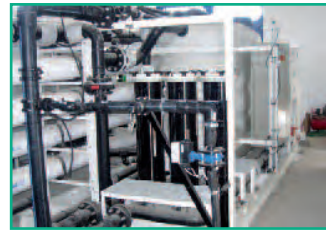


Special models

- **Integrated Version**
The SLCE® RO units of the EBW range can be equipped with many additional accessories and options, which enable them to be adapted to the specifics of each application and each user. These options can be integrated on a common frame, ensuring easy on-site installation and implementation.
- **EBW-BI, BI-Osmosis Version**
Unit integrating two stages of reverse osmosis, guaranteeing the production of water of very low conductivity, for the medical sector and the pharmaceutical industry...

Capacity (*) m ³ /24h		Model	Electric power kW	Mass kg	Dimensions mm			
Salinity 2g/l	Salinity 5g/l				A	B	C	D
14	14	EBW 202	4	120	1300	500	1100	1000
20	20	EBW 203		120				
26	25	EBW 204		130				
34	31	EBW 206		150				
47	33	EBW 209		180				
58	50	EBW 409	7,5	230	3360	600	1100	1300
73	60	EBW 412		260				
80	68	EBW 415		290				

(*) Production figures given at +/- 10% from raw water with a temperature of 25°C and salinity as specified. Performance must be confirmed in the light of a full analysis of the water to be treated and depends on the specific conditions in which the equipment is being used.



GBW

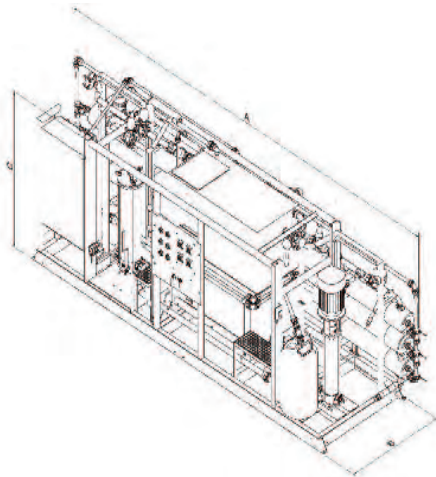
Up to
1000 m³/24h

Fully automatic operation, controlled by PLC, with open design for low upkeep and ease of use, very comprehensive equipment, notably with chemical pre-treatment of the raw water, and an integrated membrane cleaning circuit, including chemical preparation tank.



Main applications

- **Production of drinking water**
From bore holes, for life camps and for hotels, in regions without drinking water.
- **Production of process water**
Mechanical industry, painting, surface treatment, pharmaceutical and cosmetic industry.
The food processing industry...



Special models

The units of GBW range can be equipped with various complementary equipment, according to particular specifications. They can also be assembled in a container.

Capacity (*) m ³ /24h		Model	Electric power kW	Mass kg	Dimensions mm		
Salinity 2g/l	Salinity 5g/l				A	B	C
90	85	GBW 803	10	1500	3600	1300	1750
160	130	GBW 806		1800			
180	150	GBW 809		2100			
275	230	GBW 1610	18	2400	6020	1500	2100
340	280	GBW 1615		2900			
440	380	GBW 3015	25	3100	6020	1500	
530	410	GBW 3020		3600			
600	500	GBW 3025		4100			
650	550	GBW 6024	55	5200	7500	1750	
800	700	GBW 6036		6400			
100	800	GBW 6048		7600			

(*) Production figures given at +/- 10% from raw water with a temperature of 25°C and salinity as specified. Performance must be confirmed in the light of a full analysis of the water to be treated and depends on the specific conditions in which the equipment is being used.

149 rue Salvador Dali
ZA de Kergouaran - Caudan
CS 8002
56607 LANESTER Cedex
France



tel.

fax

e-mail

internet



Your contact

